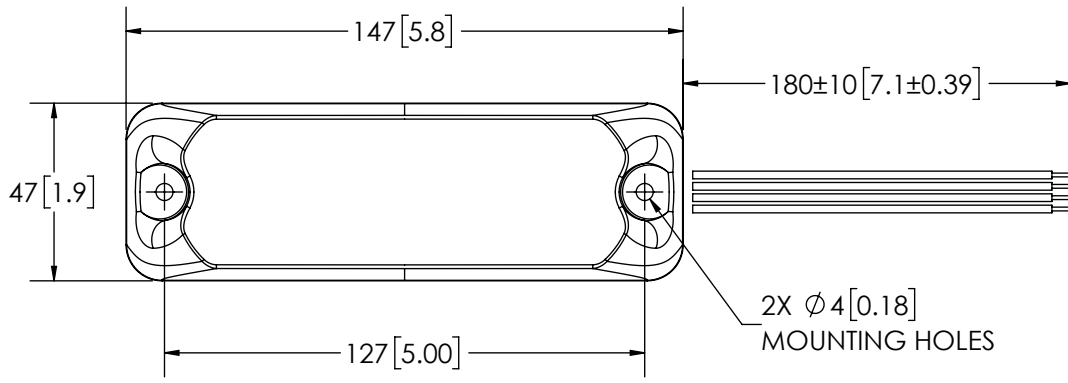


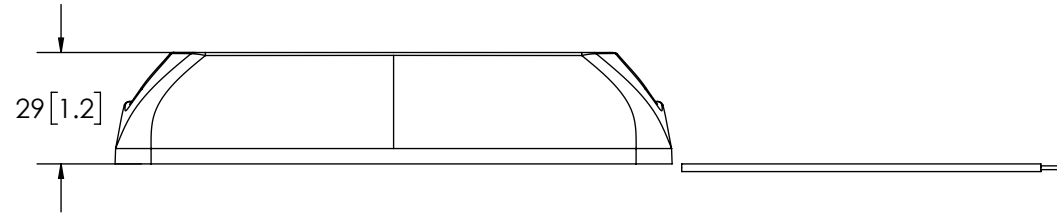
| REVISION HISTORY |                                |            |
|------------------|--------------------------------|------------|
| REV.             | DESCRIPTION                    | DATE       |
| 01               | PRELIMINARY RELEASE PER V14023 | 2016-07-25 |
| A                | INITIAL RELEASE PER V14023     | 2016-08-10 |



4-22 AWG WIRES  
 RED - POSITIVE (+)  
 BLACK - NEGATIVE (-)  
 BLUE - FLASH PATTERN SELECT  
 YELLOW - SYNC

**SPECIFICATIONS**

- CERTIFICATIONS: ECE R10; R65, IP67/K  
 Note: Unique components, accessories, and hardware kits are not typically Included in the Product Certification Test Protocols. Unless otherwise Specified, the Product Certifications referred to herein are predicated upon the base product model configuration.
- FLASH MODE: DOUBLE : 120 ± 5 FLASHES PER MINUTE  
 QUAD : 120 ± 5 FLASHES PER MINUTE
- VOLTAGE (NOMINAL): 12 to 24 VDC
- VOLTAGE (EXTREME): 10 to 48 VDC
- CURRENT (PEAK): SEE CHART (@ 12.8 VDC NOMINAL)
- POWER (MAXIMUM): SEE CHART (@ 12.8 VDC NOMINAL)
- TEMPERATURE RANGE: -22°F (-30°C) TO 122°F (50°C)
- CONNECTION: 22 AWG LEAD WIRES
- MOUNTING: 2 BOLT MOUNT
- BASE MATERIAL: POLYCARBONATE
- LENS MATERIAL: POLYCARBONATE
- PRODUCT WEIGHT: 0.14 Kg (0.30 LBS)




| FGS PRODUCT CHART |        |                |             |     |
|-------------------|--------|----------------|-------------|-----|
| FGS P/N           | COLOUR | CURRENT (PEAK) | POWER (MAX) | R65 |
| 3812A             | AMBER  | 0.696A         | 8.9W        | YES |
| 3812B             | BLUE   | 0.650A         | 8.3W        | YES |
| 3812C             | CLEAR  | 0.743A         | 9.5W        | N/A |
| 3812R             | RED    | 0.460A         | 5.9W        | N/A |

NOTES:  
 1. DIMENSIONS IN MILLIMETERS [INCHES (FOR REFERENCE)]

NON DISCLOSURE AGREEMENT

THIS DRAWING AND THE DESIGN IT DISCLOSES ARE THE PRIVATE PROPERTY OF ESG AND IS ISSUED IN CONFIDENCE FOR ENGINEERING INFORMATION ONLY. THE DRAWING AND / OR DESIGN MAY NOT BE USED, COPIED, REPRODUCED, OR OTHERWISE DISCLOSED IN PART OR AS A WHOLE TO OUTSIDERS OR USED FOR ANY OTHER PURPOSE WITHOUT THE PRIOR WRITTEN CONSENT OF ESG. THE DRAWING IS SUBJECT TO RECALL AT ANY TIME. YOUR POSSESSION OF THIS DOCUMENT CONSTITUTES ACCEPTANCE OF THESE TERMS. © 2015 ECCO

|  |   |   |                |   |
|--|---|---|----------------|---|
| SCALE 1:2  |   | APPROVALS                                 | DATE           | <br><a href="http://www.eccolink.com">www.eccolink.com</a><br>Americas (800) 635-5900   Europe +44 (0)113 237 5340   Asia Pacific +61 (0)3 6322444 |
| CAD GENERATED DRAWING<br>DO NOT MANUALLY UPDATE.<br>MODEL REFERENCED: A              |   | DRAWN BY: MPS                             | 2016-08-03     |   |
| TOLERANCES ARE IN INCHES, AND MILLIMETERS<br>TOLERANCES UNLESS OTHERWISE STATED ARE: |   | CHECKED: MPS                              | 2016-08-08     |   |
| MECH. ENG. SGS   |   | 2016-07-25                                |                |   |
| MILLIMETERS DECIMALS<br>XX. ± 1.0mm<br>XX.X ± 0.5mm                                  | INCHES DECIMALS<br>X.X ± 0.1<br>X.XX ± 0.04<br>X.XXX ± 0.02 | ANGLES<br>± 0.5°                          | ELEC. ENG. MMG | 2016-08-05  |
|  |   | FRACTIONS<br>± 1/64                       | TEST ENG. DFG  | 2016-08-05  |
|  |   | THIRD ANGLE PROJECTION                    | SALES. JSM     | 2016-08-03  |
|  |   | Electronically Controlled Use Latest Copy |                | <b>LED HEAD, RECTANGLE, 12-48V</b><br>CUSTOMER PART NO. <b>3200</b><br><b>SEE CHART</b><br>SIZE: A4 DWG. NO. <b>3812X</b> REV. <b>A</b><br>SHEET 1 OF 1 Project: V14023 Date Created: 2016-07-25  |