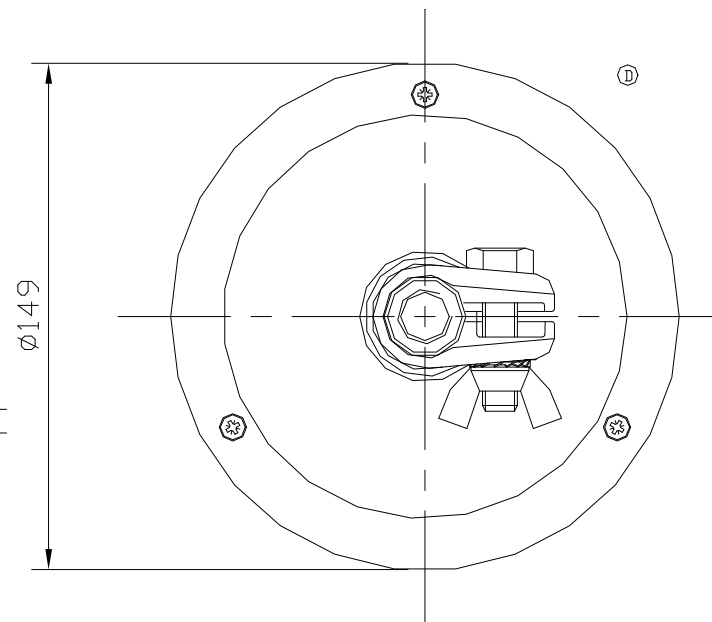
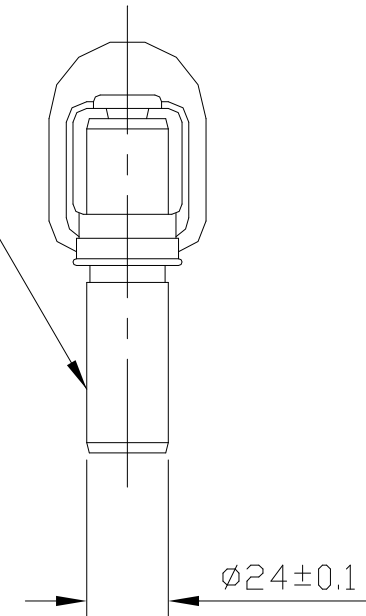
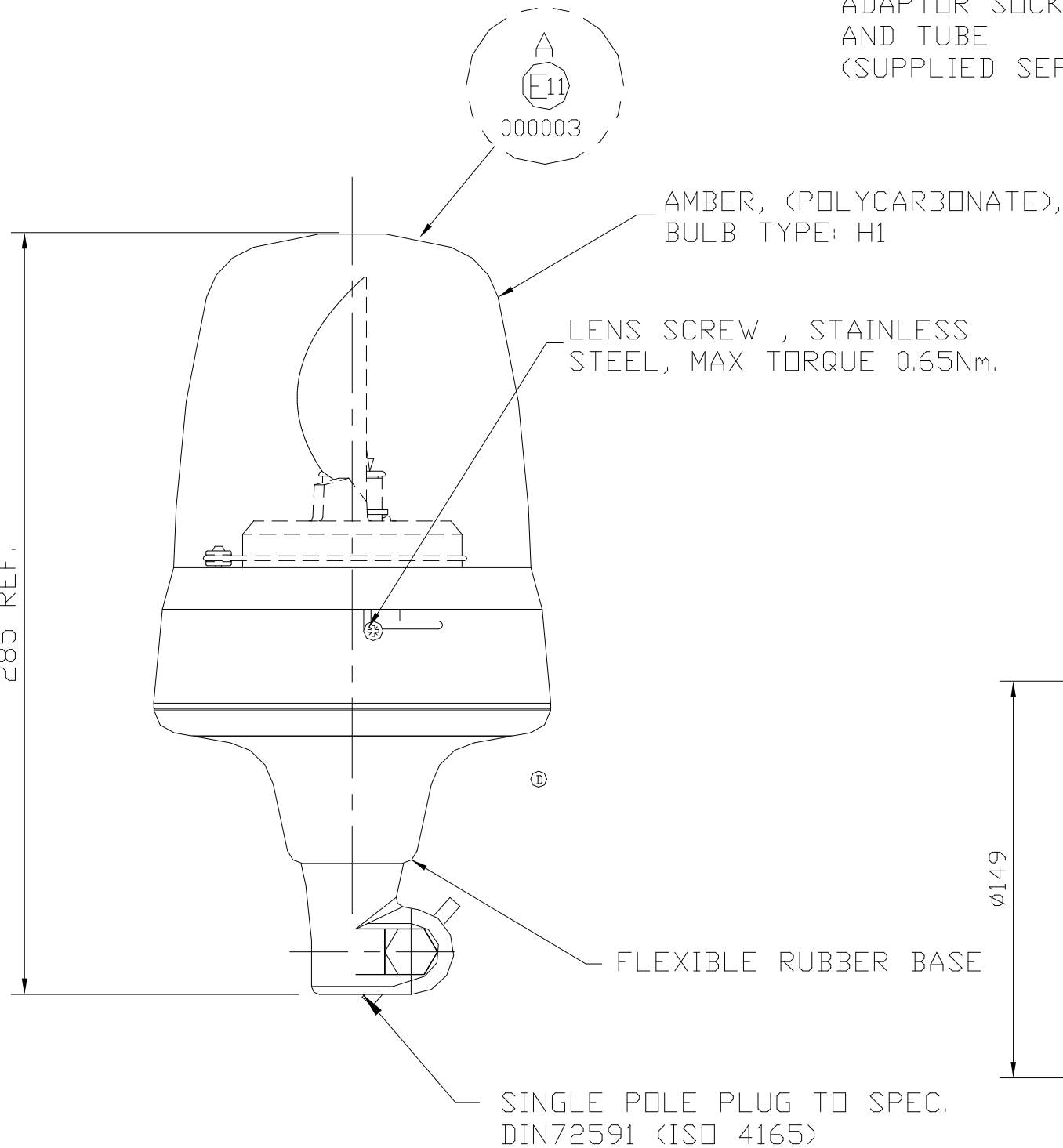


1046

E APPROVAL DETAILS

13109
ADAPTOR SOCKET
AND TUBE
(SUPPLIED SEPERATELY)

285 REF.



CERTIFICATION PROCEDURE INVOLVED -
UNAUTHORISED DEVIATION STRICTLY
FORBIDDEN

MOD No	REFERENCE	ISS	DATE	BY
4496	PRE-PROD REL.	1	22/04/93	A.S.
4628	PRODUCTION REL.	A	12/07/93	R.W.
4893		B	18/02/94	A.S.
5978		C	20/05/96	M.E.
7798		D	5/5/99	M.G.
15581		E	02/01/03	S.B.

NOTES

- ENVIRONMENTAL PERFORMANCE :-
1. COMPLIES WITH BRITAX (PMG) LTD SPECIFICATION ENS 054, SAE J845 AND VIBRATION TO SAE J575 JUL'83.
 - 1.1 APPROVED TO EMC DIRECTIVES 95/54/EC, 2000/2/EC AND 97/24/EC ch8.
 - 1.2 COMPLIES WITH ELECTROMAGNETIC COMPATIBILITY DIRECTIVE 89/336/EEC.
 - 1.3 APPROVED TO ECE REG.10 AND REG.65.

OPERATING TEMPERATURE: -30 TO +50 DEG.C
VOLTAGE : 24V
RANGE : 21.6V TO 28.8V

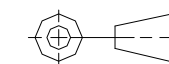
BULB TYPE : H1 70W
CURRENT CONSUMPTION : 3.0A
FLASH RATE : 160 PER MINUTE
- NOMINAL
ROTATION : CW FROM ABOVE
LENS MATERIAL : POLYCARBONATE

DIMENSIONS IN MILLIMETRES
DO NOT SCALE IF IN DOUBT - ASK

DRAWN IN ACCORDANCE WITH BS308

DIMENSIONAL TOLERANCES :

3RD ANGLE PROJECTION



METRIC
DESIGN

BRITAX PMG LTD
BESSINGBY INDUSTRIAL ESTATE
BRIDLINGTON
EAST YORKSHIRE
YO16 4SJ



DRAWN	DATE	CHECKED	SCALE
A.SHARP	22/04/93	R.W.	1:2

TITLE
OUTLINE
ROTATING BEACON
BELT DRIVEN

A 3	PART No.	Sht No of
	395.200	