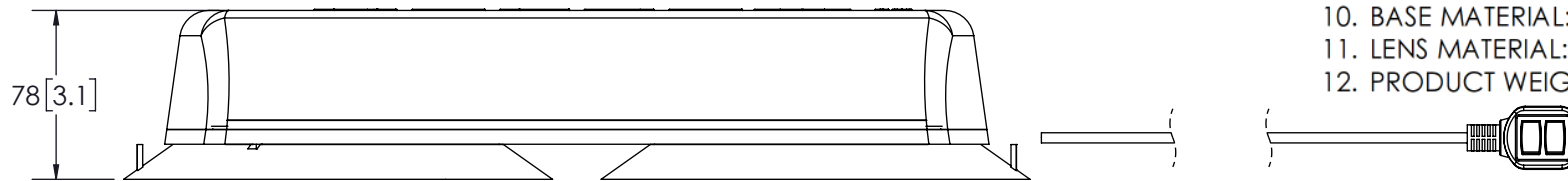
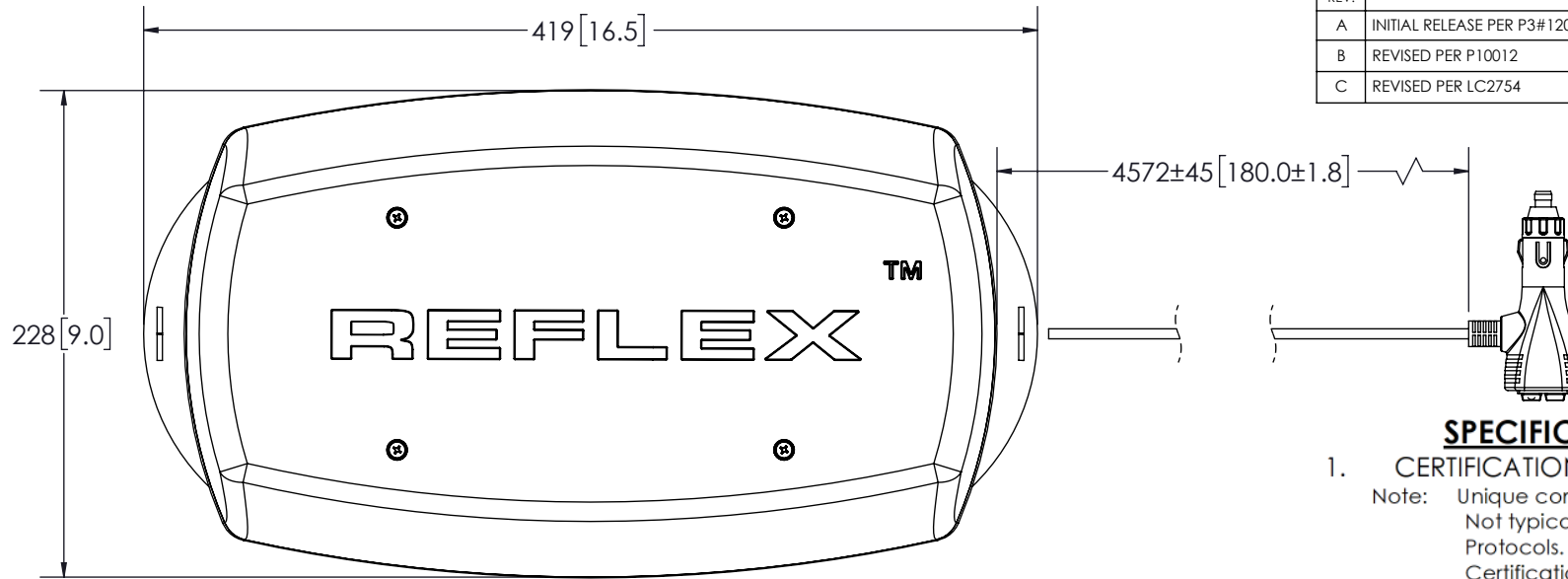



| REVISION HISTORY |                              |            |
|------------------|------------------------------|------------|
| REV.             | DESCRIPTION                  | DATE       |
| A                | INITIAL RELEASE PER P3#12011 | 2012-08-13 |
| B                | REVISED PER P10012           | 2019-03-07 |
| C                | REVISED PER LC2754           | 2020-07-09 |



### SPECIFICATIONS

- CERTIFICATIONS:** R10; R65; IP69K  
 Note: Unique components, accessories and hardware kits are Not typically Included in the Product Certification Test Protocols. Unless otherwise Specified, the Product Certifications referred to herein predicated upon the Base product model configuration
- FLASH MODE:** DOUBLE : 125 ± 5 FLASHES PER MINUTE  
 QUAD : 125 ± 5 FLASHES PER MINUTE  
 QUINT : 125 ± 5 FLASHES PER MINUTE
- VOLTAGE (NOMINAL):** 12 to 24 VDC
- VOLTAGE (LIMITS):** 9.0 to 32.0 VDC
- CURRENT (PEAK):** 5.0 A @ 12VDC
- POWER (MAXIMUM):** 64.5W 12 VDC NOMINAL
- TEMPERATURE RANGE:** -22°F (-30°C) TO 122°F (50°C)
- CONNECTION:** 3 – 20 AWG WIRE CABLE W/CONN
- MOUNTING:** MAGNETIC
- BASE MATERIAL:** POLYCARBONATE
- LENS MATERIAL:** POLYCARBONATE
- PRODUCT WEIGHT:** 1.19 Kg (2.65 LBS)

- NOTES:**
- ROHS COMPLIANT
  - DIMENSIONS IN MILLIMETRES [INCHES (FOR REFERENCE)]

| SCALE 1:3.5  |                 |           | APPROVALS   | DATE            |  <b>ECCO</b> <sup>®</sup> www.eccolink.com<br>Americas (800) 635-5900   Europe +44 (0)113 237 5340   Asia Pacific +61 (0)3 63322444 |             |           |        |              |             |           |  |              |        |  |  |
|--|-----------------|-----------|---|-----------------|--|-------------|-----------|--------|--------------|-------------|-----------|--|--------------|--------|--|--|
| CAD GENERATED DRAWING<br>DO NOT MANUALLY UPDATE.<br>MODEL REFERENCED: B  |                 |           | Dr. <b>Liam</b> Hainsworth                          | 2020-06-22      |  |             |           |        |              |             |           |  |              |        |  |  |
| TOLERANCES ARE IN INCHES, AND MILLIMETERS<br>TOLERANCES UNLESS OTHERWISE STATED ARE:   |                 |           | CHECKED JUP   |                 |  |             |           |        |              |             |           |  |              |        |  |  |
|  |                 |           | MECH. ENG. JGW                                      |                 |  |             |           |        |              |             |           |  |              |        |  |  |
|  |                 |           | ELEC. ENG.  |                 |  |             |           |        |              |             |           |  |              |        |  |  |
|  |                 |           | TEST ENG.   |                 |  |             |           |        |              |             |           |  |              |        |  |  |
|  |                 |           | SALES. JSM  |                 |  |             |           |        |              |             |           |  |              |        |  |  |
| <table border="1"> <thead> <tr> <th>MILLIMETERS DECIMALS</th> <th>INCHES DECIMALS</th> <th>ANGLES</th> </tr> </thead> <tbody> <tr> <td>XX. ± 1.0mm</td> <td>X.X ± 0.1</td> <td>± 0.5°</td> </tr> <tr> <td>XX.X ± 0.5mm</td> <td>X.XX ± 0.04</td> <td>FRACTIONS</td> </tr> <tr> <td></td> <td>X.XXX ± 0.02</td> <td>± 1/64</td> </tr> </tbody> </table>   |                 |           | MILLIMETERS DECIMALS                                | INCHES DECIMALS | ANGLES   | XX. ± 1.0mm | X.X ± 0.1 | ± 0.5° | XX.X ± 0.5mm | X.XX ± 0.04 | FRACTIONS |  | X.XXX ± 0.02 | ± 1/64 | <b>LED MINIBAR, 8 HEAD, MAG, 12-24VDC, CLEAR</b><br>CUSTOMER PART NO.<br><b>5565CA-VAMAG</b> |  |
| MILLIMETERS DECIMALS   | INCHES DECIMALS | ANGLES    |   |                 |  |             |           |        |              |             |           |  |              |        |  |  |
| XX. ± 1.0mm  | X.X ± 0.1       | ± 0.5°    |   |                 |  |             |           |        |              |             |           |  |              |        |  |  |
| XX.X ± 0.5mm   | X.XX ± 0.04     | FRACTIONS |   |                 |  |             |           |        |              |             |           |  |              |        |  |  |
|  | X.XXX ± 0.02    | ± 1/64    |   |                 |  |             |           |        |              |             |           |  |              |        |  |  |
| PROPRIETARY AND CONFIDENTIAL INFORMATION<br>THIS DRAWING AND THE DESIGN AND OTHER INFORMATION DISCLOSED HEREIN ARE THE PROPERTY OF ELECTRONIC CONTROLS COMPANY AND/OR ITS ECCO SAFETY GROUP AFFILIATES ("ECCO") AND IS ISSUED IN CONFIDENCE TO RECIPIENT FOR ENGINEERING INFORMATION PURPOSES ONLY. THIS DRAWING AND THE DESIGN AND OTHER INFORMATION DISCLOSED HEREIN MAY NOT BE USED, COPIED, REPRODUCED OR OTHERWISE DISCLOSED IN PART OR IN WHOLE TO THIRD PARTIES OR USED FOR ANY OTHER PURPOSE WITHOUT PRIOR ECCO WRITTEN CONSENT. ECCO RESERVES ALL PATENT, COPYRIGHT, TRADEMARK, AND OTHER PROPRIETARY RIGHTS TO THIS DOCUMENT, INCLUDING ALL DESIGN, MANUFACTURING, REPRODUCTION, USE AND SALES RIGHTS THERE TO. THIS DRAWING IS SUBJECT TO RECALL BY ECCO AT ANY TIME, AND YOUR POSSESSION AND/OR USE CONSTITUTES ACCEPTANCE OF THESE TERMS. ©2020 ELECTRONIC CONTROLS COMPANY |                 |           | SIZE: A4 DWG. NO. <b>5565CA-VAMAG</b> REV. <b>C</b> |                 |  |             |           |        |              |             |           |  |              |        |  |  |
| THIRD ANGLE PROJECTION   |                 |           | Electronically Controlled Use Latest Copy           |                 | SHEET 1 OF 1 Project: P10012 Date Created: 2011-12-02  |             |           |        |              |             |           |  |              |        |  |  |