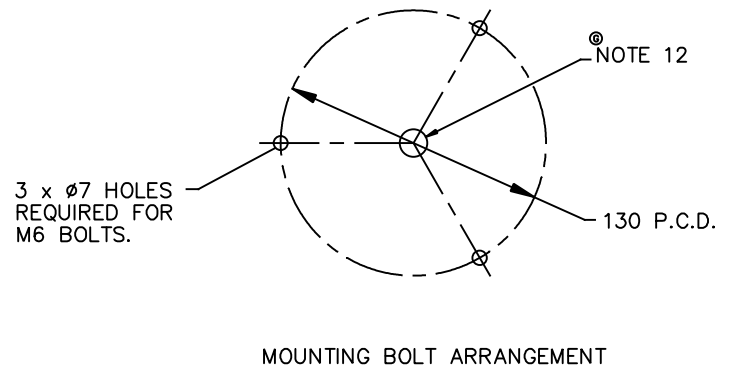


FLASH RATE DETAILS :-

VOLTAGE (DC)	CURRENT CONSUMPTION mA	FLASH RATE/MIN
12V	370±20	75±5
24V	315±20	75±5
100V	135±20	75±5



CERTIFICATION PROCEDURE INVOLVED - UNAUTHORISED DEVIATION STRICTLY FORBIDDEN

MOD No	REFERENCE	ISS	DATE	BY
R2286	PRE- PROD. REL.	1	31/03/99	R.G.
7777		2	14/04/99	R.G.
R2326	PROD. RELEASE	A	26/05/99	R.G.
9786		B	24/01/01	R.G.
12380		C	03/01/02	R.G.
12801		D	30/08/02	S.B.
15720		E	07/02/03	S.B.
16530		F	19/12/03	S.B.
16701		G	18/02/04	S.B.
18265		H	20/09/05	R.P.
43351		J	15/12/15	JMW

- NOTES
- ENVIRONMENTAL PERFORMANCE :- COMPLIES WITH BRITAX (PMG) LTD SPECIFICATION EN5 054.
 - APPROVED TO EMC DIRECTIVES 95/54/EC, 2000/2/EC AND 97/24/EC chB.
 - COMPLIES WITH EMC DIRECTIVE 89/336/EEC, CE AND LOW VOLTAGE DIRECTIVE 73/23/EEC.
 - APPROVED TO UL 583.
 - OPERATING TEMPERATURE: -20°C TO +50°C.
 - VOLTAGE RANGE: 10-100 VOLTS DC OR 20-72 VOLTS AC.
 - LIGHT SOURCE: XENON TUBE.
 - TUBE LIFE: 3000 HOURS.
 - NOMINAL POWER: 2 WATT.
 - REVERSE POLARITY PROTECTED.
 - FLASH RATE:-SEE TABLE AT 1C.
 - LAMP IS INSULATED RETURN.
 - TIGHTENING TORQUE ON NUTS 2 Nm MAX.
 - BOLT LENGTH, WHEN FITTED, FROM BASE OF BEACON CUSHION (12mm REF.)
 - CABLE PROTECTION SPOUT, THIS WILL PUSH UP INTO BASE IF NOT FITTED.
 - CABLE EXIT HOLE DIAMETER TO SUIT CABLE ASSEMBLY OR CABLE PROTECTION SPOUT.
 - THE BEACON MUST BE INSTALLED ON A HORIZONTAL SURFACE WITH THE LENS FACING UPWARDS, TO MEET WITH FLAMMABILITY REQUIREMENTS.
 - THE ELECTRICAL SUPPLY TO THE BEACON MUST BE FITTED WITH A FUSE, MAXIMUM RATING OF 1A.

MATERIAL	SPEC
FINISH	SPEC

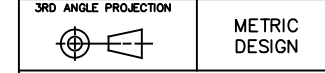
ESTIMATED MASS

TOOL No.

DIMENSIONS IN MILLIMETRES
DO NOT SCALE IF IN DOUBT - ASK

DRAWN IN ACCORDANCE WITH BS308

DIMENSIONAL TOLERANCES :
AS SPECIFIED



BRITAX PMG LTD BESSINGBY INDUSTRIAL ESTATE BRIDLINGTON EAST YORKSHIRE YO16 6SU				
DRAWN	DATE	CHECKED SEE RELEASE /CHANGE NOTE	SCALE	
R. GRAY	26/03/99		1:2	
TITLE CUSTOMER DRAWING MULTI-VOLTAGE BEACON				